

Digital Twin Scan Technology

A 360° Facility Scan Allows Users to “Walk Through” Your Facility from Anywhere.

The 360° facility scan provides a high-resolution, detailed panorama of the entire area, with specific rooms and equipment labeled as needed.

Each label can be hyperlinked to important documentation, such as manufacturing instructions, maintenance logs, service manuals and electrical or PID diagrams.

- › **Save Time**
- › **Reduce costs**
- › **Improve performance**

Applications Include:

- › Equipment moves and capital expansion projects: High-resolution documentation of equipment connections helps to avoid problems caused by incorrect/incomplete documentation
- › Asset documentation: Asset location and condition details, including measurements accessed directly from the viewer
- › Workflow improvement: A facility scan of the current state is invaluable for any Value Stream Mapping or 5S initiative
- › Employee training: 3D facility mapping — with area, station, and equipment labels — allows efficient training for new employees with less disruption on the floor
- › Custom applications not listed above are available



View an example of a 360° digital scan of the NC State University Minerals Research Lab. ncstateies.com/MRLtour

Contact your Regional Manager to learn more about the applications for a facility scan.

Solutions



**Advanced Manufacturing
& Technology Deployment**



**Business Growth,
Innovation & Marketing**



**Business & Operational
Assessments**



**Cybersecurity
Strategies**



**Defense Industry
Initiatives**



**Environment, Energy &
Sustainability Services**



**Evaluation Services &
Resource Development**



**Industrial & Systems
Engineering**



**Instructional
Design**



**Leadership & Organizational
Development**



**Management Systems
& Quality**



**Process Optimization
and LEAN**



**Project
Management**



**Southeastern OSHA
Training Institute
Education Center**



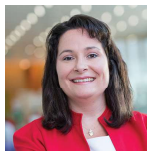
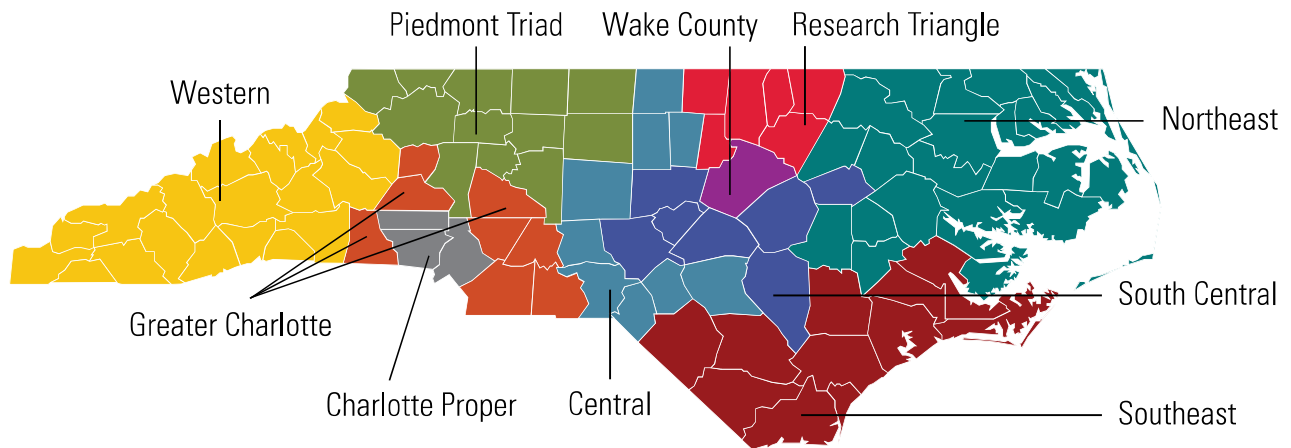
**Supply Chain &
Supplier Matching**



**Workplace Health
& Safety**

NC State University Industry Expansion Solutions Regional Managers

Serve All 100 Counties in North Carolina.



Piedmont Triad

Kami Baggett
919.830.7292
kami_baggett@ncsu.edu



Northeast

Lori Benn
919.988.7475
lori_benn@ncsu.edu



Wake County

Robert Crew
919.830.2941
robert_crew@ncsu.edu



Southeast

Mark Everett
919.274.8572
mark_everett@ncsu.edu



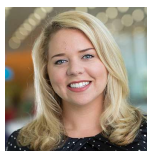
Charlotte Proper

Jennifer Fielder
704.380.0063
jennifer_fielder@ncsu.edu



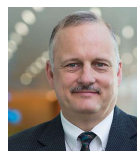
Greater Charlotte

Tamara Mack
803.206.5686
tamara_mack@ncsu.edu



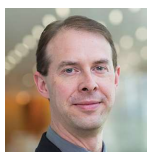
South Central

Anna Mangum
919.210.6050
anna_mangum@ncsu.edu



Western

Chris McGraw
828.329.3119
chris_mcgraw@ncsu.edu



Research Triangle

Mitch Poteat
919.607.0684
mitch_poteat@ncsu.edu



Central

Mary Tillery
910.622.5849
mary_tillery@ncsu.edu

NC STATE UNIVERSITY Industry Expansion Solutions



We Can Help. 919.515.2358 | ieservices@ncsu.edu

NC State University Industry Expansion Solutions is the extension and outreach team for the College of Engineering and provides connections, networking with industry experts, and can help identify the resources, tools and customized programs needed to increase an organization's productivity, efficiency, quality and profit.

ies.ncsu.edu **f** **i** **n** **@NCStateIES**

Industry Expansion Solutions administers the National Institute of Standards and Technology Manufacturing Extension Partnership (NIST MEP) for North Carolina (NCMEP).



ncmep.org

01-10-2025